



46 St. Marys Crescent

Tickhill, Doncaster, DN11 9JW

Offers Around £410,000

Occupying an enviable corner position on this sought after roadway within Tickhill is this immaculately presented and substantially extended 3/4 bedroom detached bungalow. The property in brief comprises; entrance hallway, spacious lounge/dining room, stunning openplan kitchen/dining room, master bedroom with dressing room and luxury en suite shower room, two further good sized bedrooms, office/bedroom 4 and contemporary family bathroom with 4 piece suite. Outside; front, side and rear gardens and large paved driveway providing off road parking for 2 vehicles. Ideally located close to local amenities within Tickhill centre and bus routes this fantastic, spacious property really must be viewed to be appreciated.

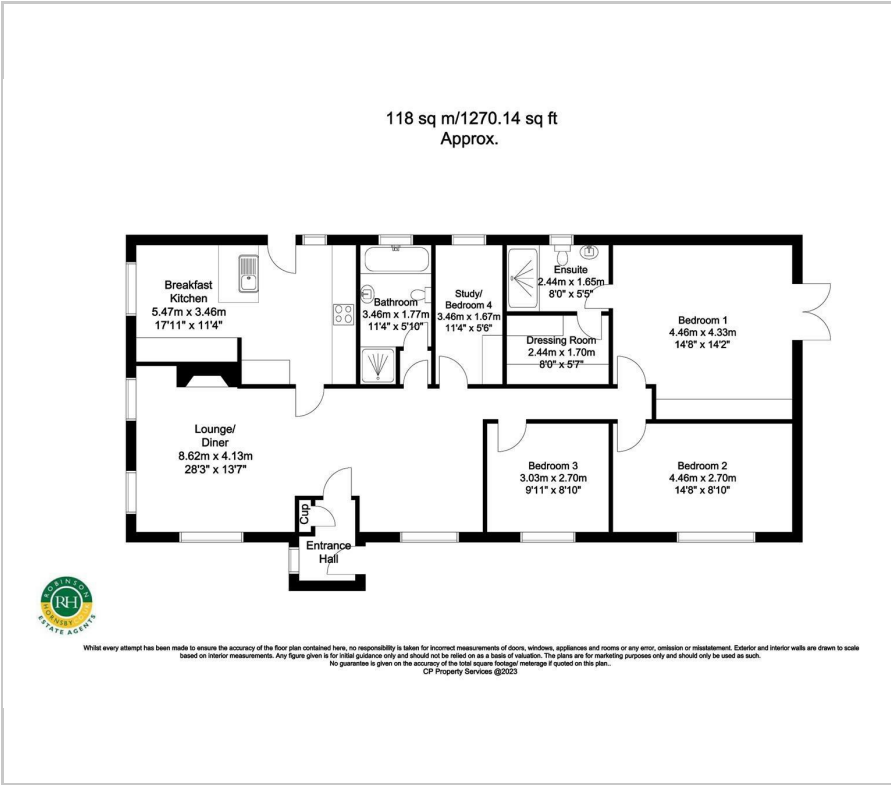
- Detached bungalow
- Three/four bedrooms
- Substantially extended and beautifully presented throughout
- Stunning openplan kitchen/dining room
- Dressing room and luxury en suite to master bedroom
- Family bathroom with 4 piece suite
- Envable corner position
- Driveway for approx. 2 vehicles
- Must be viewed
- Council tax band D and Freehold

Viewing

Please contact our Office on 01302 751616 if you wish to arrange a viewing appointment for this property or require further information.



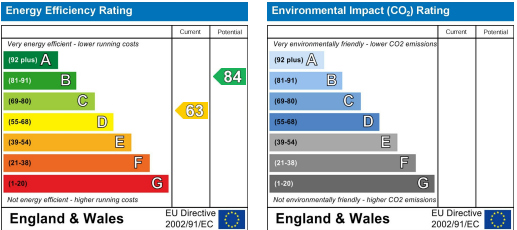
Floor Plan



Area Map



Energy Efficiency Graph



These particulars, whilst believed to be accurate are set out as a general outline only for guidance and do not constitute any part of an offer or contract. Intending purchasers should not rely on them as statements of representation of fact, but must satisfy themselves by inspection or otherwise as to their accuracy. No person in this firms employment has the authority to make or give any representation or warranty in respect of the property.